

# Pedestrian Map



## Surry County

### Comprehensive Transportation Plan

Plan date: December 21, 2011  
 Revised: January 31, 2012

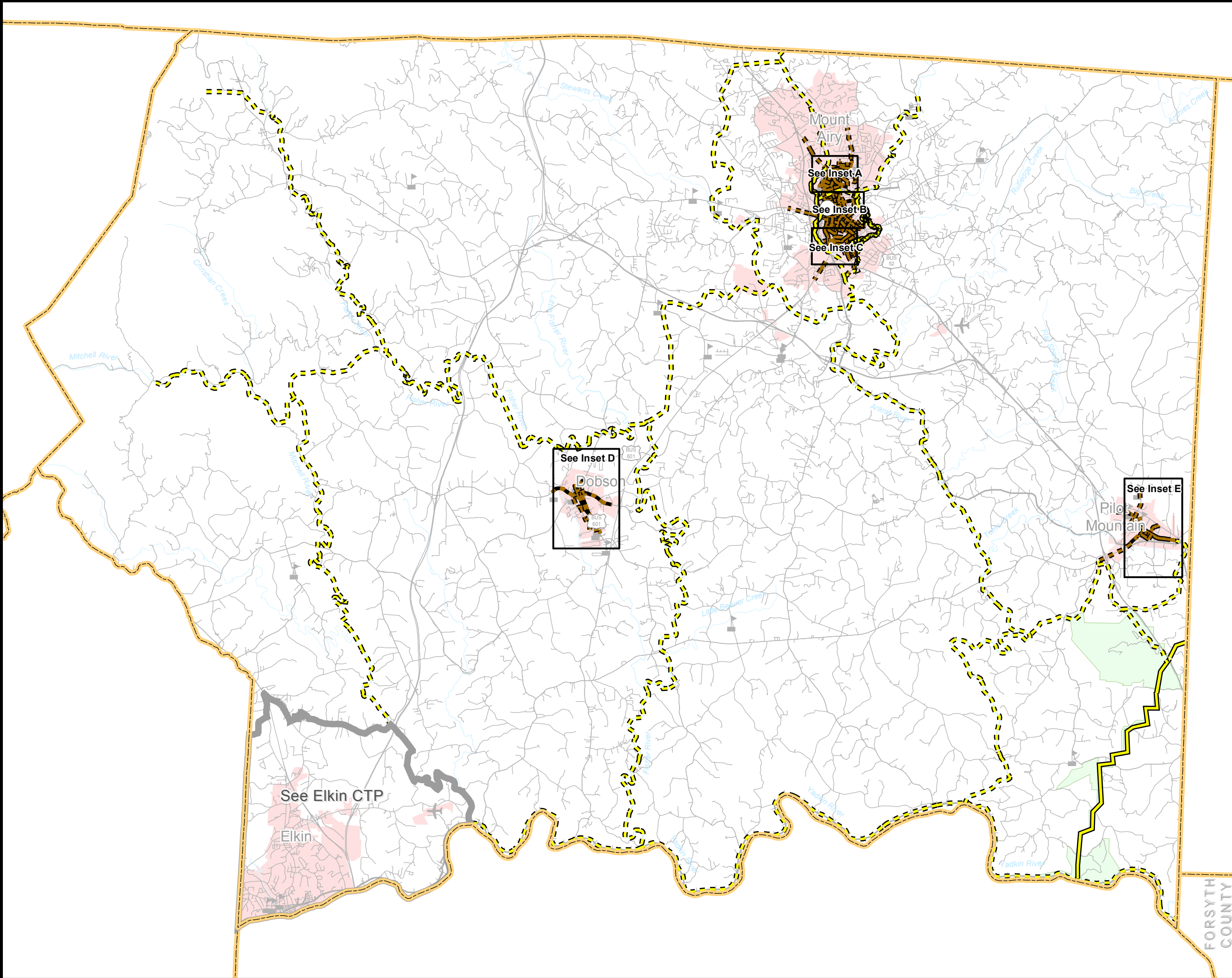
- Sidewalks**
  - Existing
  - Needs Improvement
  - Recommended
- Off-road**
  - Existing
  - Needs Improvement
  - Recommended
- Multi-Use Paths**
  - Existing
  - Needs Improvement
  - Recommended
- Grade Separation**
  - Existing Grade Separation
  - Proposed Grade Separation



Sheet 5 of 5

Base map date: April 14, 2011

Refer to CTP document for more details



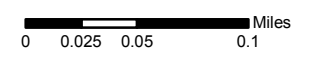
# Pedestrian Map INSET A



## Surry County

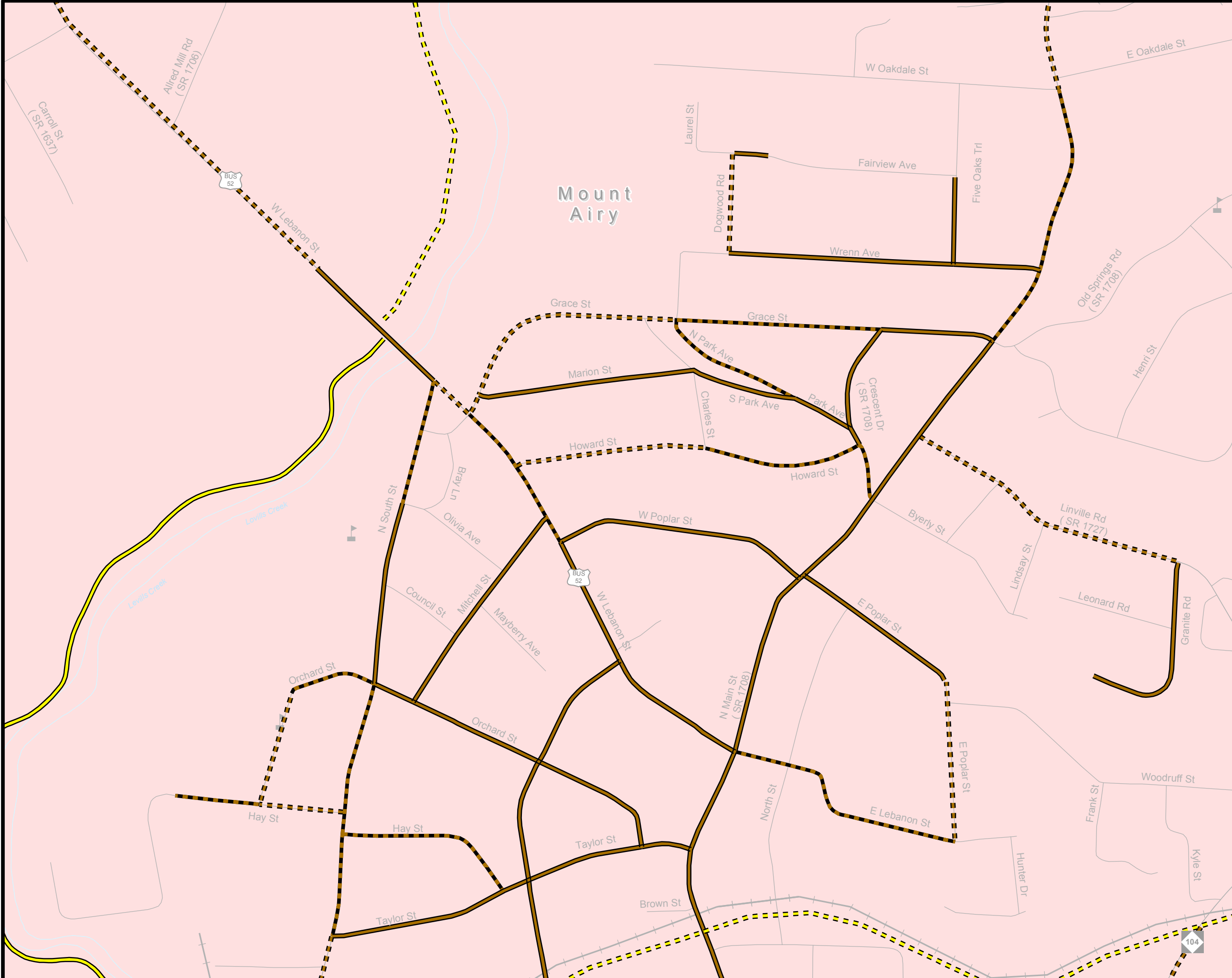
**Comprehensive  
Transportation Plan**  
Plan date: December 21, 2011  
Revised: January 31, 2012

- Sidewalks**
  - Existing
  - Needs Improvement
  - Recommended
- Off-road**
  - Existing
  - Needs Improvement
  - Recommended
- Multi-Use Paths**
  - Existing
  - Needs Improvement
  - Recommended
- Existing Grade Separation
- Proposed Grade Separation



Sheet 5A of 5  
Base map date: April 14, 2011

Refer to CTP document for more details



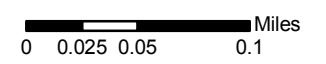
# Pedestrian Map INSET B



## Surry County

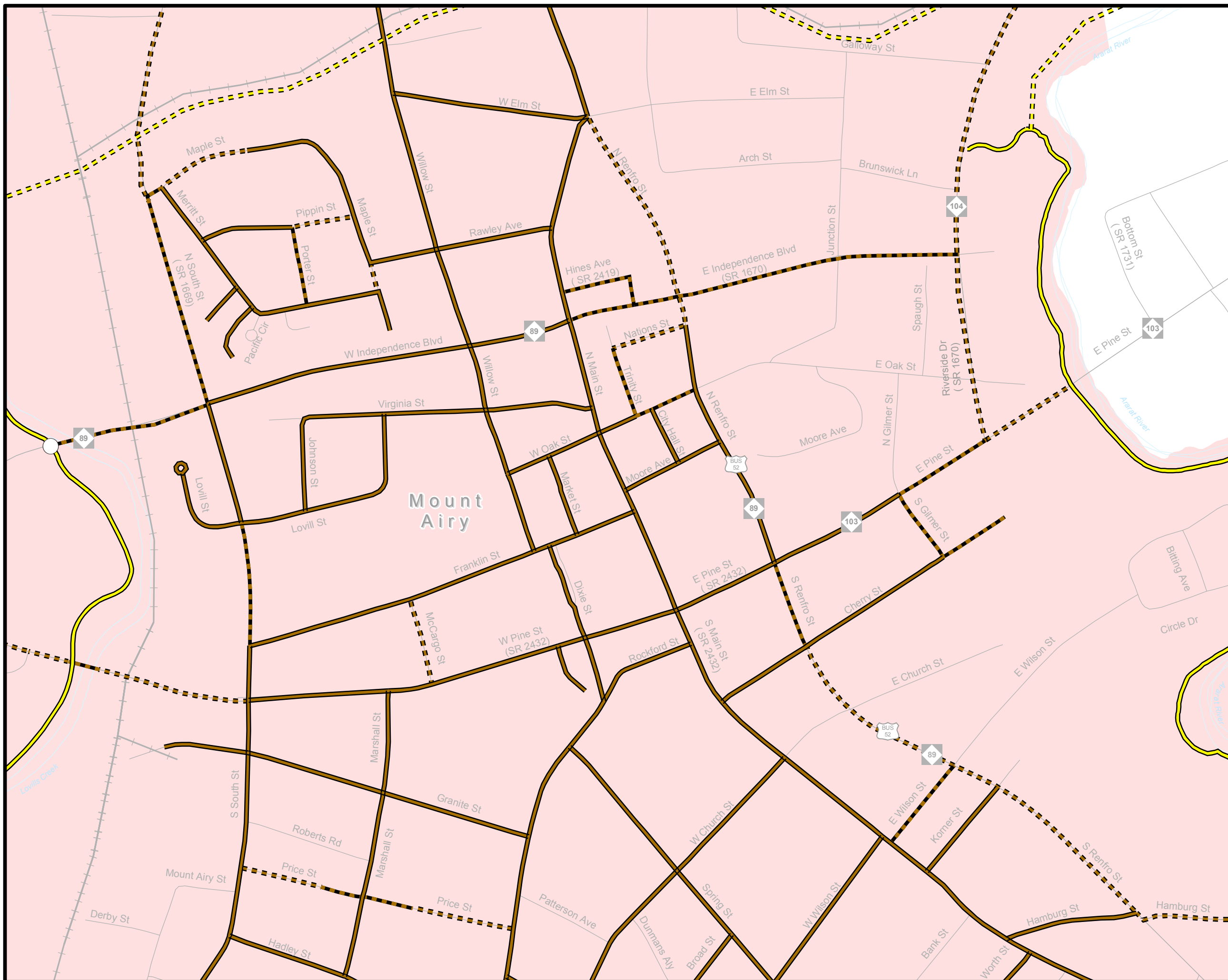
**Comprehensive  
Transportation Plan**  
Plan date: December 21, 2011  
Revised: January 31, 2012

- Sidewalks**
  - Existing
  - Needs Improvement
  - Recommended
- Off-road**
  - Existing
  - Needs Improvement
  - Recommended
- Multi-Use Paths**
  - Existing
  - Needs Improvement
  - Recommended
- Existing Grade Separation
- Proposed Grade Separation



Sheet 5B of 5  
Base map date: April 14, 2011

Refer to CTP document for more details



# Pedestrian Map INSET C



## Surry County

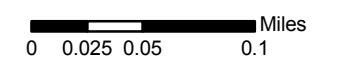
**Comprehensive  
Transportation Plan**  
Plan date: December 21, 2011  
Revised: January 31, 2012

- Sidewalks**
- Existing
  - Needs Improvement
  - Recommended

- Off-road**
- Existing
  - Needs Improvement
  - Recommended

- Multi-Use Paths**
- Existing
  - Needs Improvement
  - Recommended

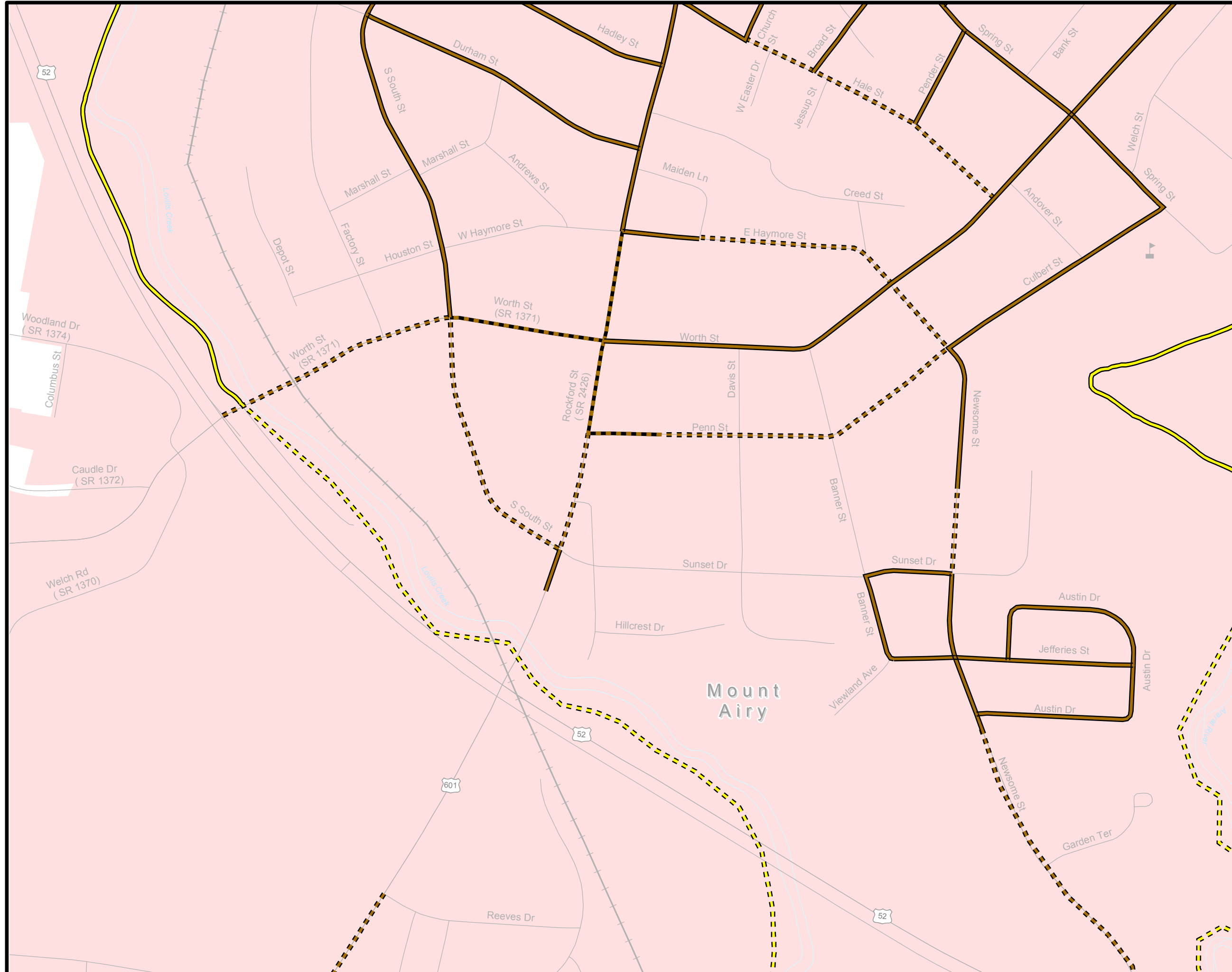
- Existing Grade Separation
- Proposed Grade Separation



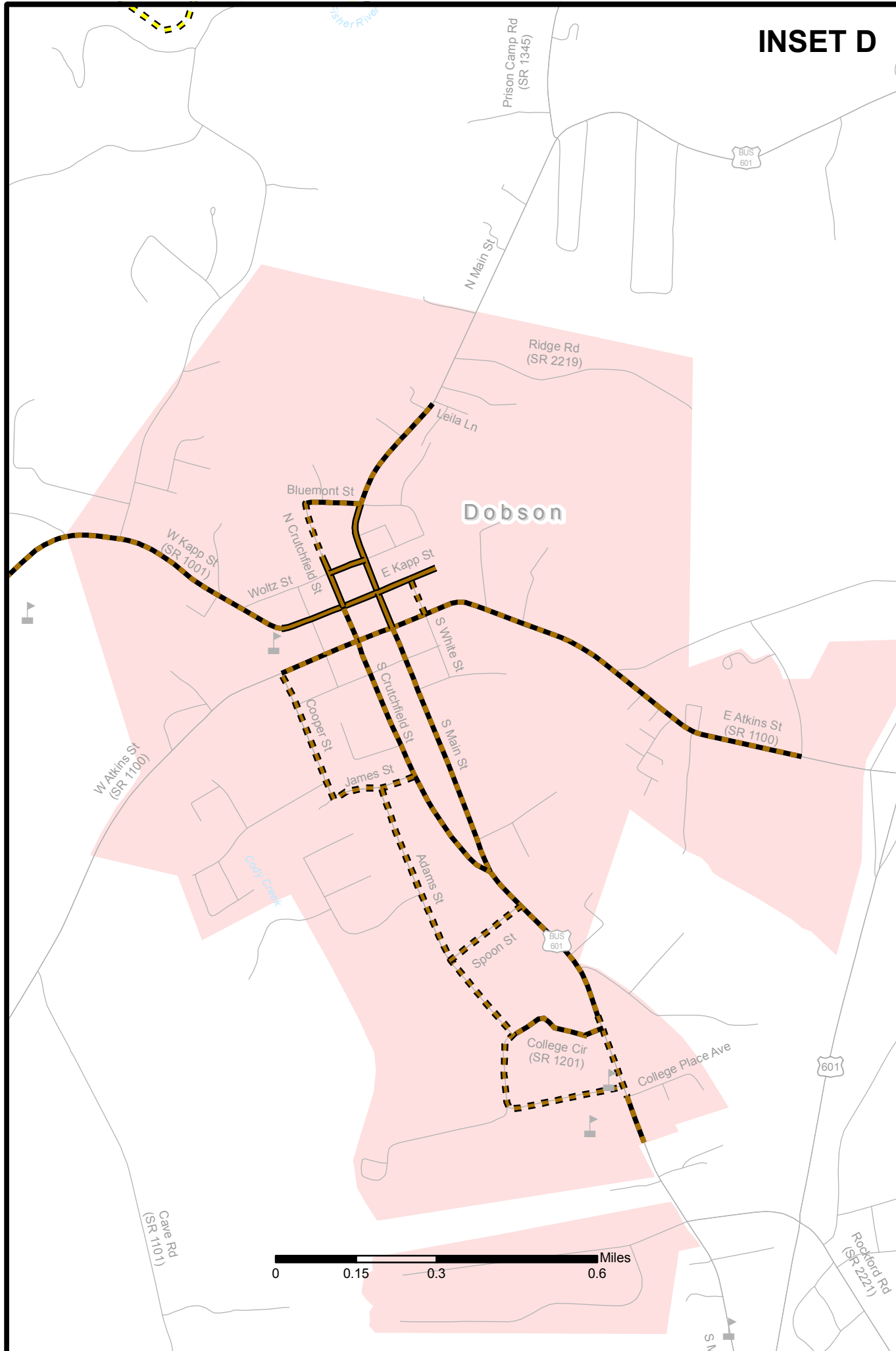
Sheet 5C of 5

Base map date: April 14, 2011

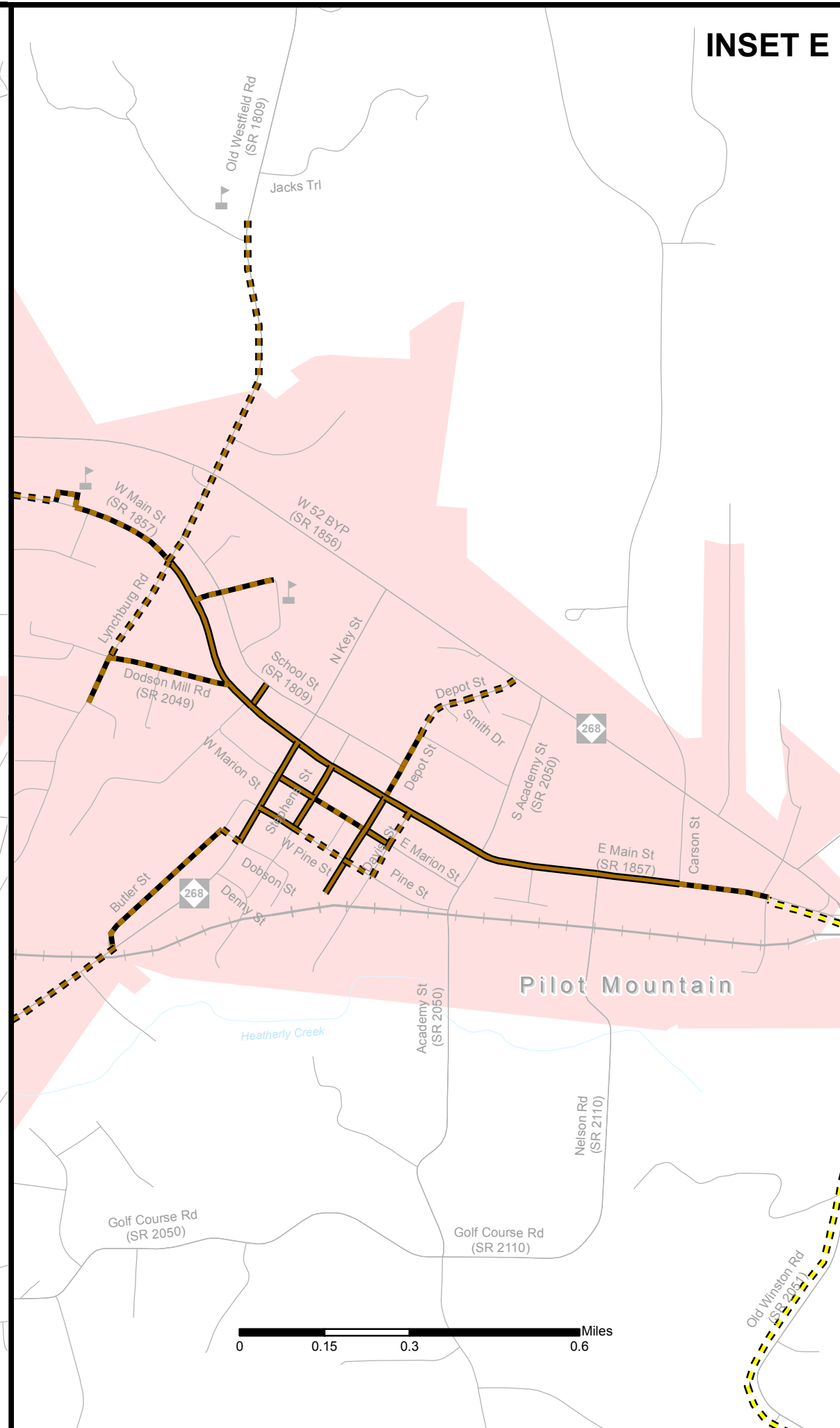
Refer to CTP document for more details



### INSET D



### INSET E



## Pedestrian Map INSETS D & E



### Surry County

### Comprehensive Transportation Plan

Plan date: December 21, 2011  
Revised: January 31, 2012

#### Sidewalks

- Existing
- Needs Improvement
- Recommended

#### Off-road

- Existing
- Needs Improvement
- Recommended

#### Multi-Use Paths

- Existing
- Needs Improvement
- Recommended

- Existing Grade Separation
- Proposed Grade Separation

